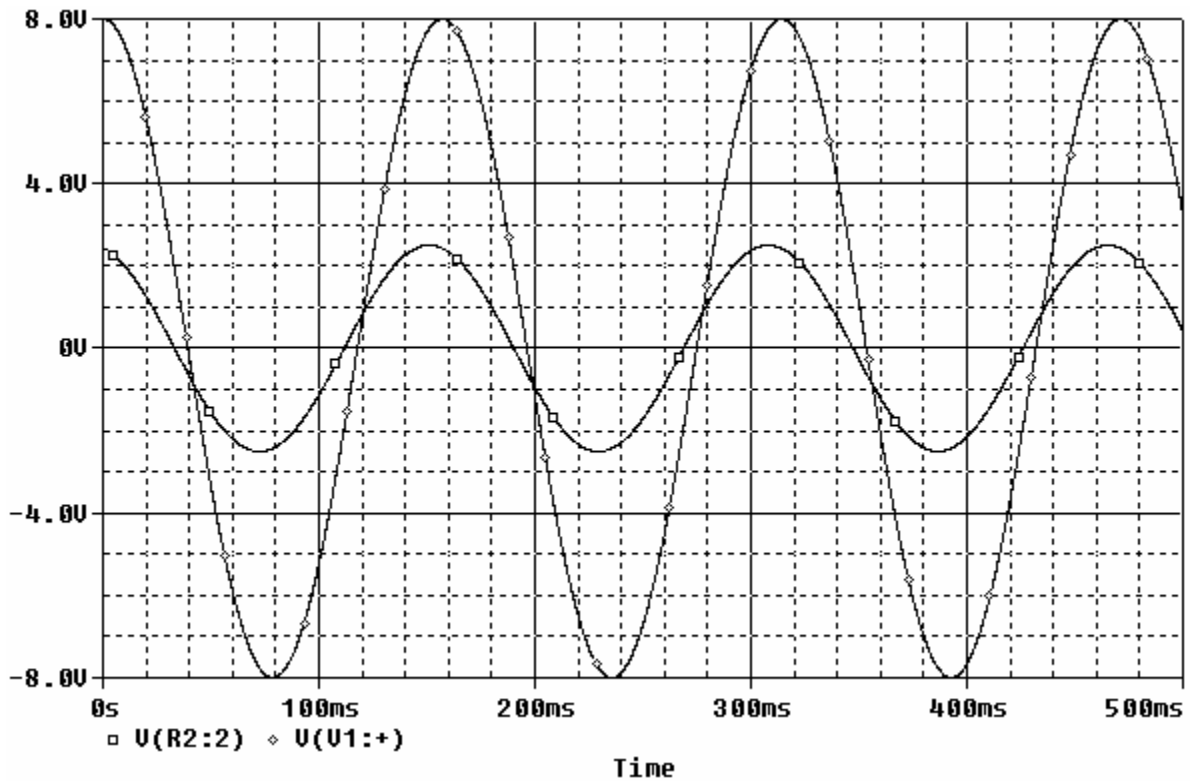
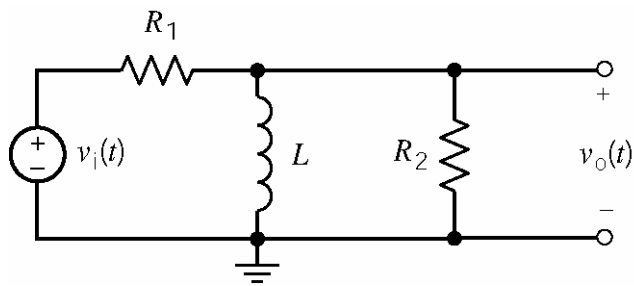


Some points on the output plot: $v_o(0.00132) = 2.5 \text{ V}$ (max v_o) and $v_o(0.00446) = -2.5 \text{ V}$ (min v_o);
 $v_o(0) = 0.6048 \text{ V}$.



Some points on the output plot: $v_o(0.0722) = -2.5$ V (min v_o) and $v_o(0.151) = 2.5$ V (max v_o); $v_o(0) = 2.43$ V.